



this is a prefab

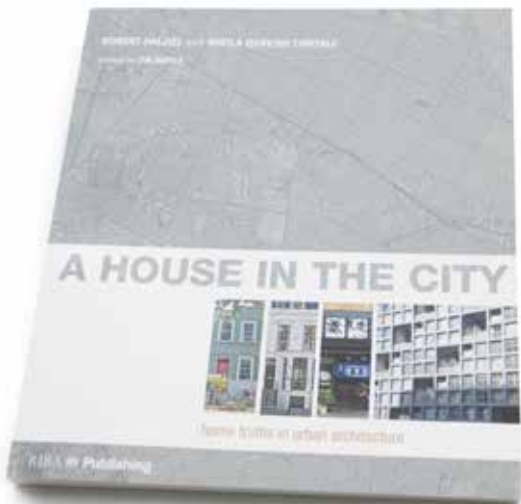
Rational House™:
Tomorrow's urban housing delivered by AECOM

AECOM



**RATIONAL
HOUSE**

A House in the City

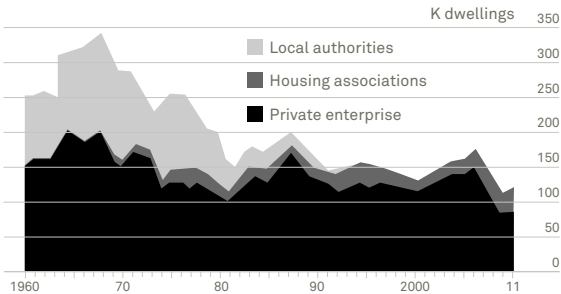


Rational House™ is a high quality residential product based on worldwide housing research, and built using Modern Methods of Construction. Its manifesto has been published by RIBA as a book entitled '**A House in the City**'.

Rational House™ is delivered by AECOM. They provide a full turn-key offer including all design, planning and engineering services, and also act as main contractor. The joint venture powerfully combines original concept work from Rational House™ with the diverse and global capabilities of AECOM.

This unique partnership draws on key features of the Government Construction Strategy 2010 and maximises the benefits of single-source multidisciplinary design and construction.

the facts: UK central government forecasts that about 250,000 new homes will be required in Britain each year for the next decade. Less than half that number of dwellings are currently being completed annually.



Rational House™ is making a contribution to solving the housing crisis with a mission to develop 1,000 homes per annum by 2020 through strategic partnering with public and private sector land owners.

Rational House™ is:

Urban

Scaleable

Modular

Flexible

High Quality

Generous

Sustainable

Attractive



urban:

Designed to achieve high density but low rise housing solutions

Capable of creating attractive urban forms, streets and squares, as well as fitting into difficult city infill sites





scaleable:

Components can be combined to form a limitless variety of dwelling types of various heights and sizes

Family houses, flats, maisonettes, mews courts, and student accommodation can all be created with the same component set



modular:

Assembled rapidly from standardised parts
manufactured off-site

Cost and programme certainty are assured

0179 354 2040
0179 365 5995
N 0159 201 2160
01448 381 2457
0538 066 1384

Residential



Typical house



2 Maisonettes



1 Flat
1 Studio
1 Maisonette

Commercial



Live/Work



Office



Retail/Office

2nd

1st

GF

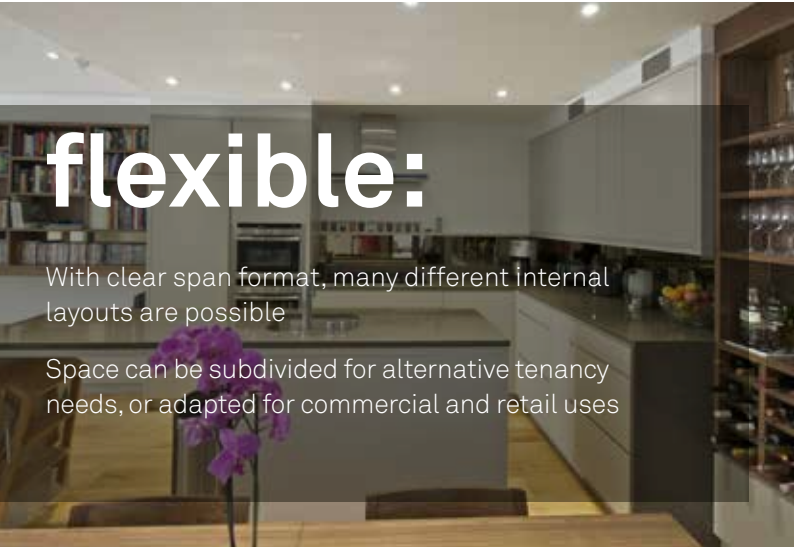
B



flexible:

With clear span format, many different internal layouts are possible

Space can be subdivided for alternative tenancy needs, or adapted for commercial and retail uses





high quality:

Timeless appeal, like the best housing
of the past: robust, low-maintenance

Off-site fabrication yields highest possible
quality at lowest cost

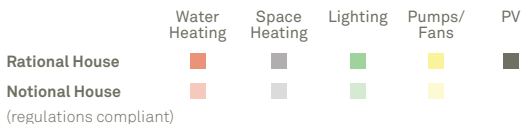
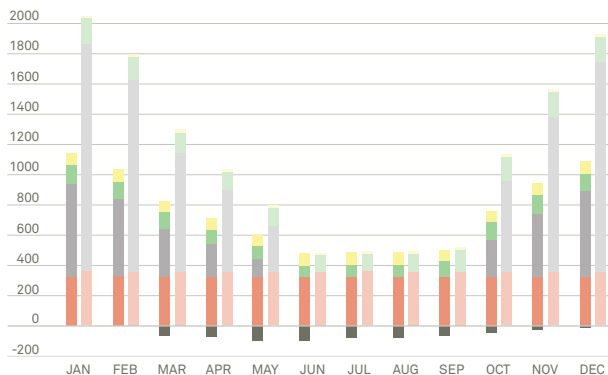
A photograph of a modern bedroom with large, dark-framed windows and a balcony. The room features a bed with a dark, textured coverlet. The windows offer a view of a city street with buildings and trees. The ceiling is white with recessed lighting. A semi-transparent dark grey box is overlaid on the lower half of the image, containing white text.

generous:

Exceeds best practice space standards
for all room types

Large windows and high ceilings are
standard features

COMPARATIVE ENERGY CONSUMPTION kWh/MONTH



sustainable:

Low energy both in its manufacture and in use

Complies with UK Code for Sustainable Homes
Level 4 as a minimum



attractive:

Designed with care to ensure good proportions and detailing

A large variety of external finishes, textures and colours are available

Contact:

Rational House[™] Ltd is based in London. Projects are undertaken throughout the U.K. as well as internationally using the global network of AECOM offices.

For further information, please contact:

Amy Charles, Business Development
and Marketing Manager

TELEPHONE: +44 (0)7508 021084

EMAIL: amy.charles@rationalhouse.com

www.rationalhouse.com
